

# AerPPC PP-9645

Power Efficient Intel Haswell Panel PC



**FEC**

# PP-9645

We aim to exceed your expectations by providing high quality, reliable products with state of the art designs.

Featuring brand new AerPPC drawer design, the main unit can be easily removed for maintenance while maintaining a sleek and stylish profile. The iconic AerPPC modular system provides outstanding flexibility, serviceability, efficiency and reliability to minimize your TCO (Total Cost of Ownership).

## Add-on Devices

All AerPPC add-on devices use a USB interface for reliability, simple installation and maintenance.

USB I/O on the right side (standard) of the display



2in1 MSR + RFID

2in1 MSR + iButton

2in1 MSR + Fingerprint Reader

RFID

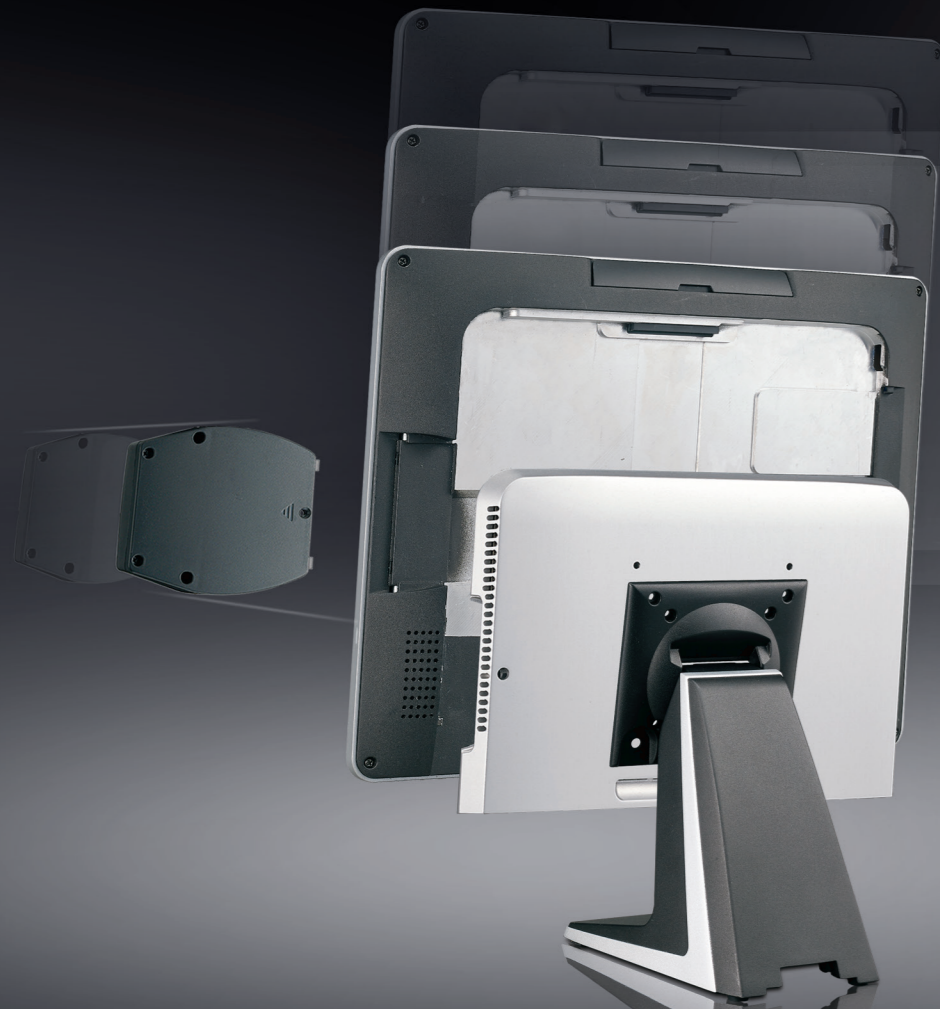
Fingerprint Reader

iButton

MSR

## Optional Display

## Features



Equipped with 2.5" SATA drive slot and onboard M.2 SSD storage (option)



Smart Fan detects CPU temperature and adjusts fan speed automatically



Standard VESA wall mount option



Integrated Pole Type Customer Display



Integrated Customer Display



Integrated Pole Type 15inch Display



One touch access to remove the main unit.



Choice of traditional bezel & true flat options



Improved power button & status LED design

Customer Display		2nd Display
VFD	LCM	
<ul style="list-style-type: none"> <li>• Various Customer Display Options</li> </ul>		<ul style="list-style-type: none"> <li>• Choose from 12", 13.3" or 15"</li> <li>• Optional Touch Support (all sizes)</li> <li>• Optional USB Hub and Audio Support (12" and 15" only)</li> </ul>

# Specifications



15" Resistive w/ Bezel



15" Resistive Bezel-Free



15" P-CAP Bezel-Free

Model	PP-9645A	PP-9645B	PP-9645C
Processor	Intel® Celeron G1820TE 2.20GHz Intel® Core i3-4330TE 2.40 GHz Intel® Core i5-4590T 3.0 GHz		
System Memory	1 x 2GB Standard, Maximum 16GB (2 x 8GB 204-pin DDR3L-1600)		
Power Supply	150W (12V / 12.5A) External Power Adaptor		
Storage Device	1 x 2.5" SATA HDD or SSD		
Second Storage	Optional M.2 Storage Device		
Construction	Aluminum Die-casting + Plastic (with Bezel)	Aluminum Die-casting + Plastic (Bezel-Free)	Aluminum Die-casting + Plastic (Bezel-Free)
Speaker	2 x 2W Internal Speaker		
Housing Color	Black	Black with Silver Trim	Black with Silver Trim
<b>Touch LCD Display</b>			
Brightness / Resolution	350 cd/m2 (LED) / 1024 x 768		
Touch	5-Wire Resistive Touch	5-Wire Resistive Touch	Projected Capacitive Touch
<b>I/O Ports</b>			
Serial Port	1 x External: COM1(RJ45) with RI / 5V / 12V Selectable		
USB Port	5 x External (Rear USB 2.0 x 2, USB 3.0 x 2, Side USB 2.0 x 1)		
Powered USB Port	1 x 24V		
Cash Drawer Port	1 x RJ11 (12V / 24V)		
LAN Port	1 x RJ45 Gigabit LAN		
Video Port	2 x		
DC Power	1 x Input 12V DC / 1 x Output 12V DC Jack 2.5 mm		
Wifi	Optional 802.11b/g/n		
<b>Optional I/O Board (Factory Install Only)</b>			
Type C	2 x Serial Port: COM 2 & COM 3 (RJ45) RI / 5V / 12V Selectable; Powered USB Port: 1 x 12V		
Type G	3 x 12V Powered USB Port		
Type K	1 x Serial Port: COM 2 (DB9) RI / 5V / 12V Selectable; 2 x 12V Powered USB Port		
<b>OS Supported</b>			
Windows	Windows 7, Windows Embedded POSReady 7, Windows 8.1, Windows Embedded 8.1 Industry, Windows 10 Enterprise		
<b>Dimensions &amp; Weight</b>			
Product (W x H x D)	Without Base: 364 x 291 x 53.9 mm, 5.2 Kg / With Base: 364 x 329 x 210 mm, 6.8 Kg		
With Carton (W x H x D)	477 x 508 x 307 mm, 10 Kg		
<b>Operation Conditions</b>			
Operating Temperature	0°C ~ 40°C (32°F ~ 104°F)		
Storage Temperature	-20°C ~ 60°C (-4°F ~ 130°F)		

\*Specifications are subject to change without notice.